



# WORLD'S BEST WORKFORCE PUBLIC HEARING

---

Thursday, September 18, 2014



ROBBINSDALE  
Area Schools

Individual focus. Infinite potential.



# What is the World's Best Workforce?

- A Minnesota statute passed in 2013 to ensure every school district in the state is making strides to increase student performance.
- Each district must develop a plan that addresses the following five goals:
  - 1) All children are ready for school.
  - 2) All third-graders can read at grade level.
  - 3) All racial and economic achievement gaps between students are closed.
  - 4) All students are ready for career and college.
  - 5) All students graduate from high school.

Minnesota Department of Education, 2014

Individual Focus. Infinite Potential.

# What does the statute require?

- Each district must adopt a strategic plan that is aligned with the World's Best Workforce. This plan must support and improve teaching and learning and include:
  - 1) Clearly defined goals and benchmarks for student achievement
  - 2) A process for assessing and evaluating each student's progress toward meeting state and local academic standards
  - 3) A system to periodically review and evaluate the effectiveness of instruction and curriculum
  - 4) Strategies for improving instruction, curriculum, and student achievement
  - 5) Practices that integrate high-quality instruction, rigorous curriculum, technology, and a collaborative professional culture that develops and supports teacher quality, performance, and effectiveness
  - 6) An annual budget for plan implementation

# What does the statute require?

- Each district must establish an advisory committee to engage the community in planning and implementing the strategic plan.
- Our World's Best Workforce Advisory Committee reflects the diversity of our district and includes students, parents, staff, and community members.
- This committee provides feedback on our strategic plan and makes recommendations to district administration and the School Board.

# What does the statute require?

- The district must review its plan annually and publish a report on plan results every fall.
- The School Board will hold an annual public meeting, survey stakeholders about their connection to schools and level of satisfaction, and submit a summary of the report to the Commissioner of Education.

# What is the Achievement and Integration Plan?

- Minnesota statutes passed for the purpose of:
  - Pursuing racial and economic integration
  - Increasing academic achievement
  - Creating equitable educational opportunities
  - Reducing academic disparities based on students' racial, ethnic, and economic backgrounds
- Each district's Achievement and Integration plan must align to the requirements of the World's Best Workforce.

# UNIFIED DISTRICT VISION

---

A Strategic Plan for High Intellectual Performance  
Through Equity

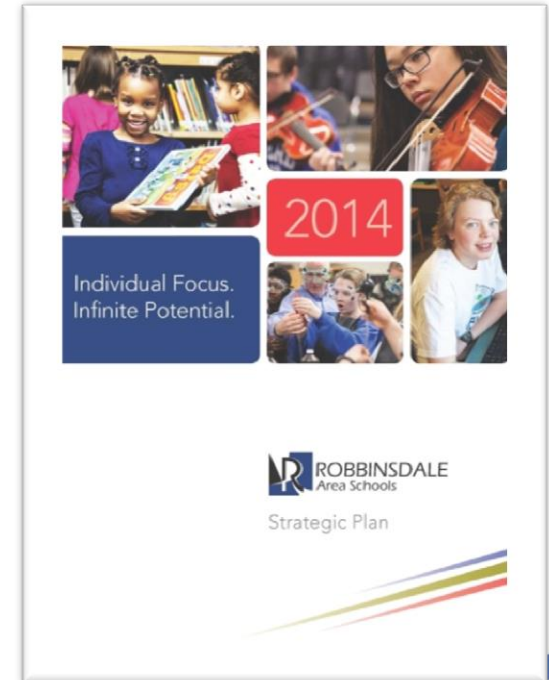


**ROBBINSDALE**  
Area Schools

Individual focus. Infinite potential.

# Unified District Vision: A Strategic Plan for High Intellectual Performance Through Equity

- ❑ **Goal 1:** Implement Policies and Practices that Open Pathways to Academic Excellence for All Students
- ❑ **Goal 2:** Utilize Culturally Responsive Teaching and Personalized Learning for All Students
- ❑ **Goal 3:** Engage Family and Community Members as Partners
- ❑ **Goal 4:** Engage and Empower Students by Amplifying Student Voice

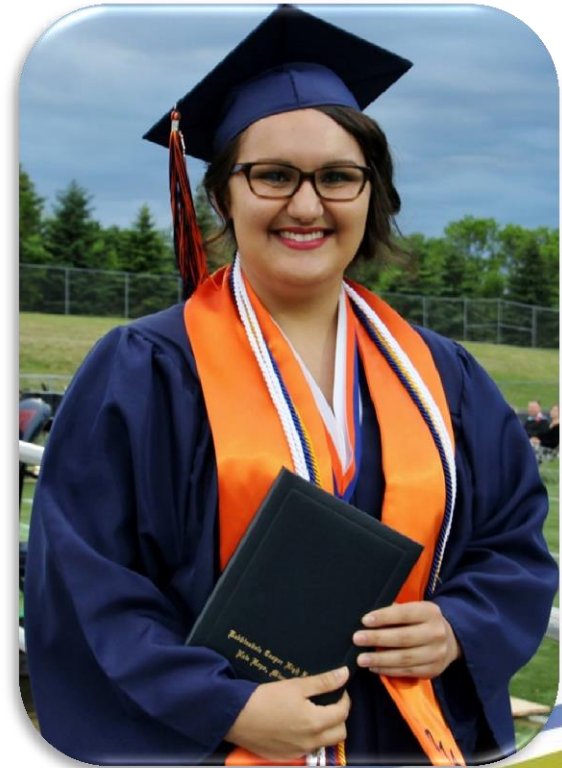


Individual Focus. Infinite Potential.



# Goal 1: Implement Policies and Practices that Open Pathways to Academic Excellence for All Students

- ❑ Focuses on each individual student's potential for academic excellence
- ❑ Strengthening our policies and practices to ensure our programs and services provide equitable access for all students
- ❑ Addresses areas which currently have high racial and economic disproportionality among groups of students



Individual Focus. Infinite Potential.

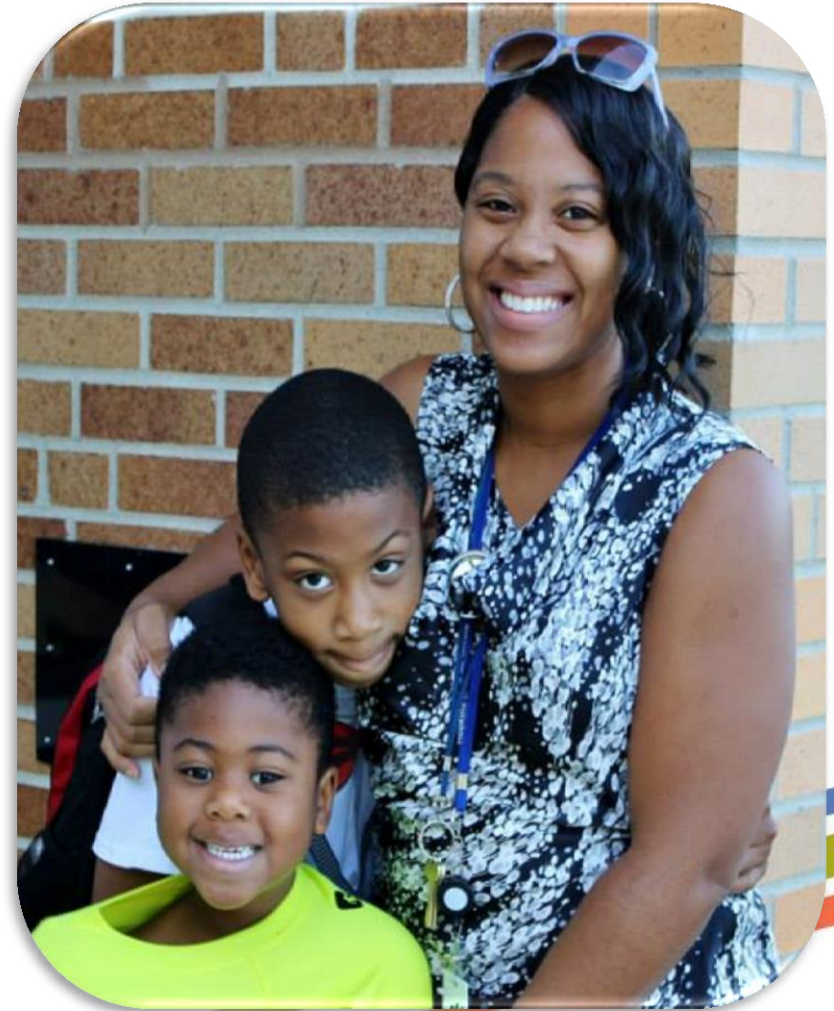
## Goal 2: Utilize Culturally Responsive Teaching and Personalized Learning for All Students

- ❑ Delivering teaching that inspires all students to experience the highest levels of critical thinking and achievement
- ❑ Implementing research-based best educational practices to engage our students in learning
- ❑ Everything is done through an equity lens
- ❑ Goal 2 incorporates many of the WBWF components



## Goal 3: Engage Family and Community Members as Partners

- ❑ Providing opportunities for meaningful engagement to support the learning of every student
- ❑ Family and community collaboration is vital to success in educating our students
- ❑ Partnering with individuals and community organizations



## Goal 4: Engage and Empower Students by Amplifying Student Voice

- ❑ Intentionally engaging student voice in important decisions
- ❑ Using student input to help with the growth and success of our district



# Action Plans for Success

- Detailed action plans have been developed for each goal area
- Action plans provide staff with strategies to impact their day-to-day work